

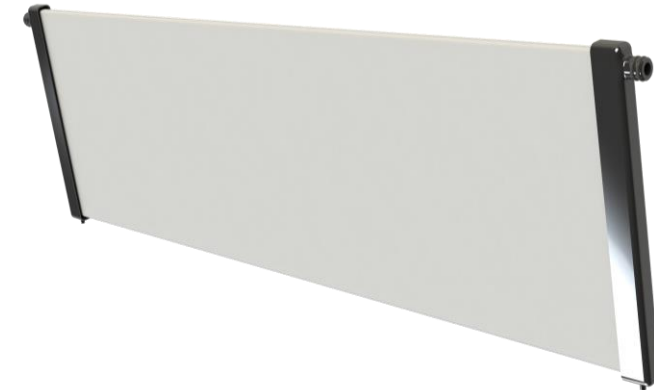
SiC Flat Sheet for SS module

Item code	SiCFS-0151-DO-T-520
Membrane material	Silicon Carbide (SiC)
O-ring material	Viton/EPDM/NBR (NSF61)
Cap material	Glass fiber/PPS (NSF61)
Active membrane surface	0,151 m ²
Nominal pore size*	0,1 µm
Overall dimensions	L532xW150xT6/11mm
Fits into permeate manifold hole of	Ø9,6mm H7
Maximum permeate flow	300 ltr/hour
Maximum suction pressure	-600 mbar
Maximum backwash pressure	2 bar
Operating temperature	5-60° C
Cleaning methods	Backwash/Ozone/High pressure jet/Chemical cleaning
Certifications	NSF61 HOT (60°C) drinking water approval
Special features	Double side filtered water outlet Double O-ring connection

*>90% removal of 0,1µm particles

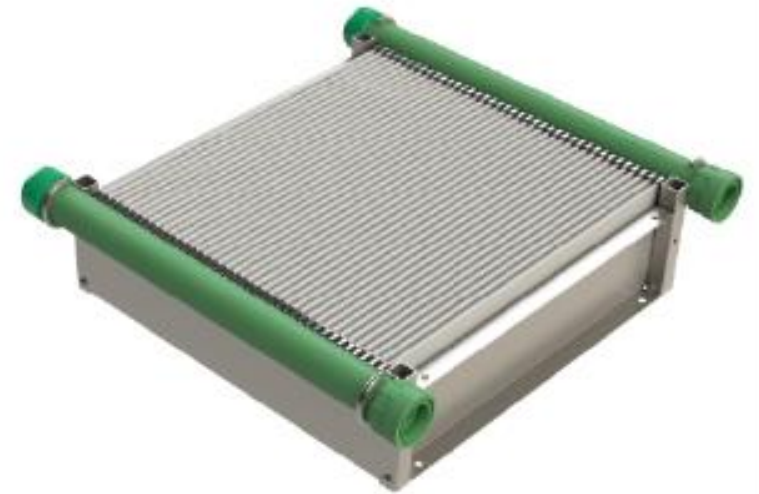


Certified to
NSF/ANSI 61



Single module

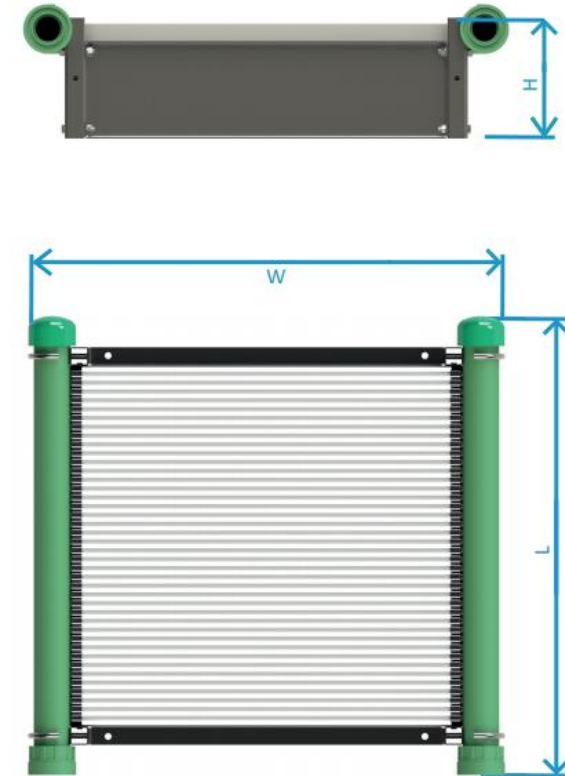
Item code	SICFM-6040-DO-T-520
Module housing material	SS316L w. PP pipe
Available O-ring material	Viton/EPDM/NBR (NSF61)
Pipe material	Polypropylene
No. of single ceramic plates	40
Avg. distance between ceramic plates	5.7 mm
Active membrane surface	6.04 m ²
Max. permeate flow	6.0 m ³ /hr
Max. filtration pressure	-0.6 bar
Max. backwash pressure	2 bar
Temperature operating range	5 - 40 °C
Cleaning methods	Backwash/Ozone/High pressure jet/Chemical cleaning
Field of application	Drinking water / wastewater / industrial
Special features	Multi ceramic plate configuration with exchangeable single ceramic plates



Certified to
NSF/ANSI 61

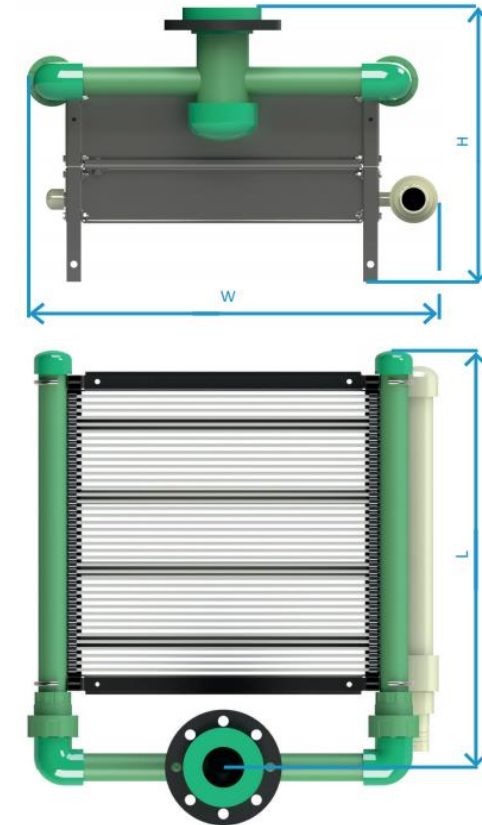
Module dimensions

Length L	624 mm
Width W	648 mm
Height H	160 mm
Weight	Approx. 35.5 kg (dry) / Approx 45.2 kg (wet)
Active area (open area between membrane plates)	0,14-0,15 m ²



Tower dimensions

Item code	SICFM-6040-DO-T-520
No. of modules per single tower	1 – 15
Length L	715 mm
Width W	690 mm
Height H (with 1 module)	469 mm (369mm without extended legs)
Extra height per module	162 mm
Weight (with 1 module)	Approx. 42.2 kg (dry) / Approx. 52.6 kg (wet)
Extra weight per module	Approx. 35.5 kg (dry) / Approx. 45.2 kg (wet)
Displacement volume (with 1 module)	27.5 Liters (without vertical manifold)
Extra displacement volume per module	22.5 Liters*
Special features	Maximum flexibility due to fully modular concept with free selection of modules per tower and towers per rack Allows for lift of individual module as well as an entire tower Aeration unit is easily installed with a $\varnothing 50$ hose Vertical manifold is quickly attached to the tower by union joints



Complete towers

