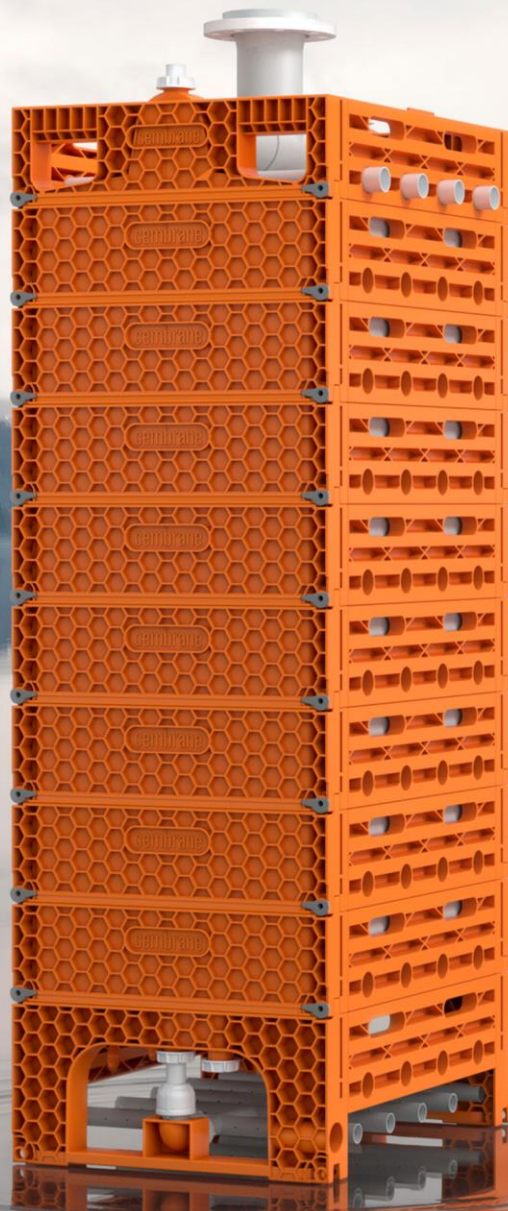


# cembrane

*clean water for life*



## DATASHEET

Product: SiCPM-6860-All-In-One Reinforced module  
Date: March 2021

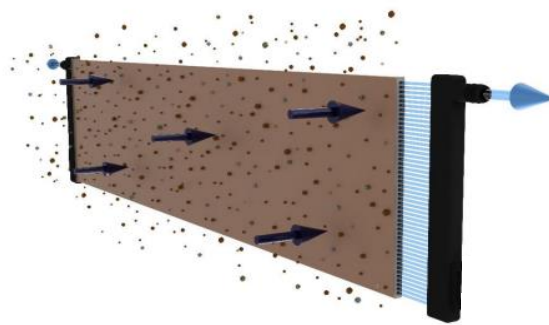
## NEW SiCPM-6860-ALL-IN-ONE REINFORCED

A Cembrane membrane is a solid-liquid separation technology that can be used to filter various sources of contaminated water such as:

- Suspended solids
- Bacteria
- Oil
- Heavy metals

### FILTRATION PRINCIPLE

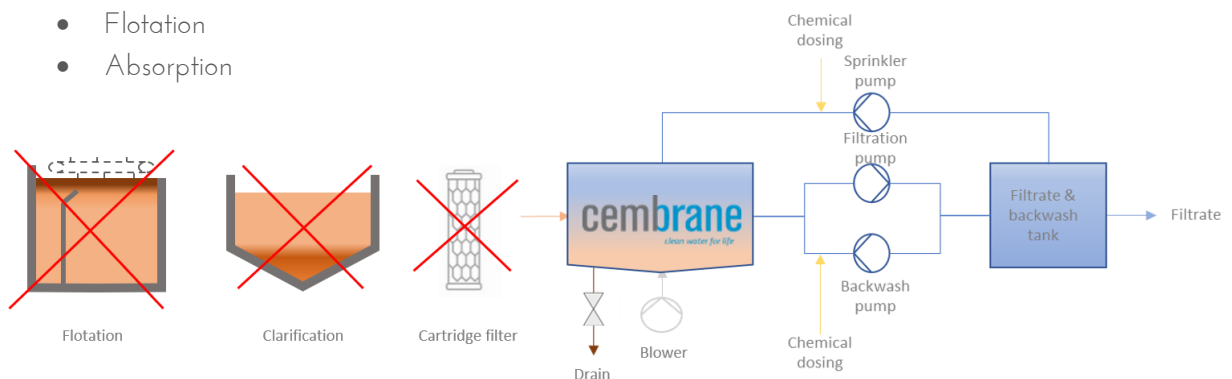
The filtration principle is submerged outside in, where clean water is drawn through the membrane with suction pressure. Suspended solids & bacteria are rejected on the membrane surface forming a cake layer while clean water is passing through the membrane body and is collected at both end caps.



### ALL IN ONE PROCESS STEP

This makes it ideal in a wide range of applications. Since it allows the user to combine several process steps into one:

- Membrane filtration
- Sedimentation
- Flotation
- Absorption



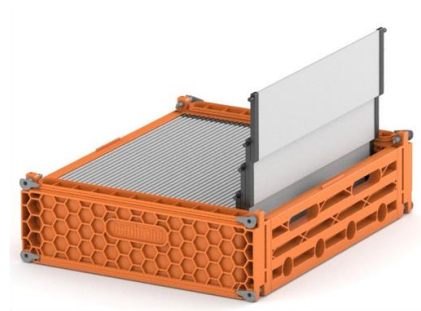
## MODULE TOWER & RACKS

Our flat sheet membranes are fitted in a square module consisting of 42 membrane sheets that are individually interchangeable. The modules are submersible & can be stacked individually on top of each other up to 15 modules in total. The membrane surface area is the determining factor for the capacity of the installation, the more surface area the more flow through the plant.

Filtered water from each single plate is collected inside the module housing and transported to the top header integrated in both module housing sides.



SiC ceramic FS membrane

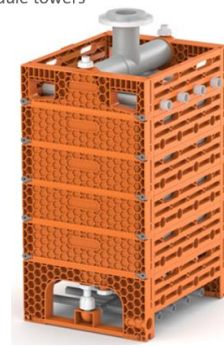


Single module



Racks & towers

Stack of module towers



## KEY FEATURES

- Lifting from top module
- Applicable in saline & aggressive water (No Steel parts)
- Reinforced ceramic & module structure
- Improved packing density
- Integrated aeration, permeate & sprinkler inside module tower
- Bottom connection to permeate line

## MODULE SPECIFICATION



Number of flat sheet membranes pr. module	42 pcs
Active membrane surface pr. module	6,86 m <sup>2</sup>
Module material	PPO/PS GF 30%

### Dimensions

Internal aeration pipe dimensions	OD32 / ID28 mm
Sprinkler pipe dimensions	OD40 mm
Top permeate module dimensions incl. flange	L700xW570xH250 mm
Permeate manifold dimensions	OD110 / ID90 mm
Filter module dimensions	L700xW570xH160 mm
Aeration base module dimensions	L700xW570xH260 mm
Allowable stacking height	1-15 modules

### Connections

Bottom permeate connection	1 1/2" thread BSP
Lifting & hanging point	Top module

### Weight & displacement volume

Dry weight Top module/Filter module/Base module	10/44/9 kg
Wet weight Top module/Filter module/Base module	11/56/9 kg
Displacement volume Top module/Filter module/Base module	8/16/7 liter